

**StitchCraft**



**Getting Started**

## Running StitchCraft

### What you need to run StitchCraft

The following are essential to run StitchCraft:

- \* a PC running Windows 95, 98, 2000, NT, ME, XP, Vista or Windows 7
- \* a hard disk with at least 30 megabytes of free disk space
- \* a colour monitor running in High-colour or True-colour mode.
- \* a CD-ROM drive

The following is suggested hardware to use StitchCraft:

- \* a Windows compatible printer
- \* a colour scanner

### Installing StitchCraft on your computer

1. Insert CD and wait for the setup program to start.
2. Follow the setup instructions displayed on the screen.

If setup does not start automatically then use the following instructions.

1. From the Windows Start button select Run...
2. In the Command Line box, type D:SETUP  
(If your CD drive is not named D:, replace the D with the appropriate drive letter)
3. Click the OK button.
4. Follow the setup instructions displayed on the screen.

A separate folder will be created and a StitchCraft icon will become available through the Start menu.

To start the program, click on the StitchCraft icon.

### Updates and Upgrades

The latest updates for StitchCraft are available for download from our website <http://www.stitchcraft.info/users/update.htm>. These usually include improvements, minor bug fixes and new thread colors. Major upgrades are released for registered StitchCraft Users from time to time.

### Staying Informed - Register Now

By registering your copy of StitchCraft you ensure that you are kept up to date with the latest StitchCraft news and developments and are able to take advantage of special discounts and offers. See the back page of this manual for more info.

## Introduction

StitchCraft is a charting aid for cross-stitch, tapestry, rug hooking and any other grid based needlework.

StitchCraft's many powerful features give you the freedom to design your own charts, then print out symbol charts and keys to sew from. You can even convert scanned images into ready-to-sew charts.

This booklet will provide you with basic information on loading and operating StitchCraft. Comprehensive information on all of StitchCraft's features is available in the on-line Help file. To learn more about accessing this Help file see the section titled "Getting Help with StitchCraft" in this booklet.

### **To make charting easy and efficient, StitchCraft's range of features include:**

- \* quick Photo Conversion feature; convert pictures to charts automatically
- \* on screen simulation of cross stitch, tent stitch and beads
- \* comprehensive design tools, including full stitch, half stitch, backstitch and french knots
- \* various thread and material libraries
- \* select colors by catalog numbers or on screen shade card
- \* ability to move, copy, mirror and rotate sections of a chart
- \* ability to change symbols and/or colors at any stage
- \* save sections of charts as motifs
- \* flexible viewing and printing sizes, including print tiling over several pages for large charts
- \* thumbnail picture of charts in the open file dialog box
- \* thread calculator for working out how much thread will be needed to complete a design

### **Basic steps in charting**

1. specify the chart size i.e. the number of cells across and down
2. select symbols/colors
3. use the appropriate tools to chart your design
4. edit the chart where necessary
5. select a grid style and display options
6. save the chart
7. print your chart and palette information

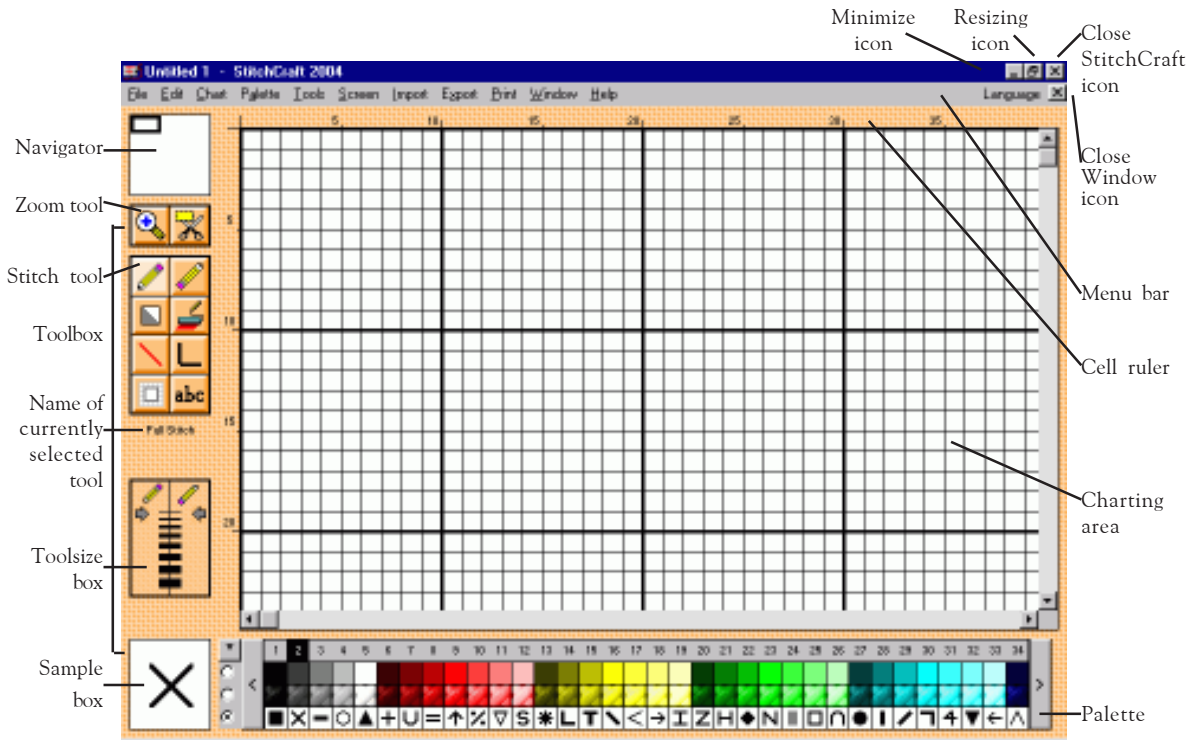
## The StitchCraft Window

Anyone who uses other Windows-based applications will encounter a few familiar features when they come to StitchCraft. The screen is laid out in a similar fashion to a paint program and the pull-down menu structure is common to many applications. People who are not experienced in Windows may also need to refer to their Windows manual for more information on using Windows.

### Elements of the StitchCraft window

The various items which make up the window are identified on the next page.

- \* The charting area where you chart your design. A blank chart, measuring 100 cells high and 100 cells wide, appears as a default. The chart can be re-sized to either a larger or smaller chart. The window only reveals a part of this chart; use the navigator or scroll bars to view other sections.
- \* The Navigator helps you move around a chart while designing. Click on the Navigator and drag the selection box to view any section of the chart.
- \* The Zoom tool gives you various viewing options including zoom in and out.
- \* The Toolbox contains the tools that you use to complete the chart. The tools allow you to place symbols or colors, erase, fill, add lines and add text.
- \* The Toolsize box in the bottom left contains different widths for drawing and erasing.
- \* The Selection box indicates which color/symbol is currently selected.
- \* The Display buttons let you select color, stitches or symbols display.
- \* The Minimize/Maximize and Resize icons appear in the top right.
- \* A menu bar appears across the top of the screen.
- \* The Cell Ruler running along the top and left of the charting area indicates which section of the chart is visible.
- \* The Palette along the bottom contains entries made up of a number, color, stitch and symbol. A scroll bar allows you to view a larger range.



The StitchCraft window

## Resizing the Window

When you start the program, the StitchCraft window will fill the screen. To change the size of the window, click on the box containing two small squares in the extreme top right of the screen. These are the Resize icons. The window will then shrink to three-quarter size. Point to a border or corner that you want to move: the pointer changes to a two-headed arrow and the border can be dragged in different directions: horizontally, vertically, and diagonally.

## Working with the StitchCraft menus

To make full use of StitchCraft, you will need to master various tools and commands. These commands are collected in a series of menus, which are represented in the menu bar across the top of the window.

### Menu convention

Dimmed lettering

An ellipsis (...)

A checkmark (✓)

A key sequence

A triangle (▶)

### What it means

The command cannot be used at this time.

A dialog box will appear when the command is chosen, asking for more information.

This command or option is active.

The key sequence is a shortcut for this command e.g. press Ctrl + Z on the keyboard for Undo.

This command leads to a cascading menu, which lists additional commands.

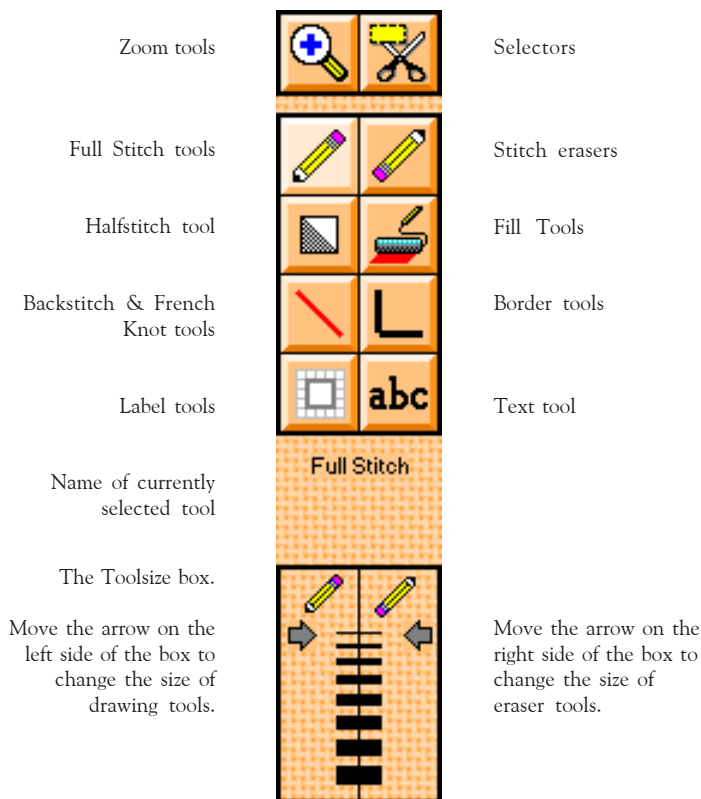
## To select a menu:

Click the mouse on the appropriate name on the menu bar. The menu will then drop down and you can click the pointer on the required menu item. You can also browse through menus.

## Working with the StitchCraft Tools

The Toolbox appears at the left of the window. All of the tools can be selected from the menu, but it is quicker to select them from the Toolbox. Many of the tools open out to reveal further related optional tools. These can be viewed by double-clicking on the appropriate tool; a string of icons will appear to the side and you can then click on the one you want to use.

The toolbox and the major tool icons



There are various tools for 'drawing' standard stitches onto the chart. The basic one is the Full Stitch tool but there are other tools designed to speed up large tasks; these include the Line, the Ellipse and the Stitch Fill.

## Using shortcut keys

Shortcut keys are key combinations that act as a shortcut for specific tasks. Not all tasks can be performed using shortcut keys, but where one is available it has been given in brackets after the full instructions.

### *Zoom tool*

Space bar = toggles between zoom in and zoom out

### *All other tools except Cut Out & Zoom*

Space bar = toggles between the selected tool and the corresponding eraser

### *Working with Cut Outs*

Shift + click & drag = move selected cut out

Control + click & drag = copy selected cut out

Control + Delete = delete selected cut out

### *Stitch Chain and Backstitch Tool*

Hold Control while drawing = draws from the centre out

Hold Shift while drawing = constrains angle to increments of 45 degrees

\* **Note:** see note below.

### *Stitch Shapes, Labels and Cut Out Tools*

Hold Control while drawing = draws from the centre out

Hold Shift while drawing = constrains shape to perfect square or circle

\* **Note:** you can hold both Control and Shift at the same time while drawing to achieve both of the above.

### *Menu Command Shortcuts*

Control + N = New chart

Control + O = Open chart

Control + S = Save chart

Control + Z = Undo

Control + Y = Redo

Control + A = Select all

Control + P = Print

## Getting Help with StitchCraft

StitchCraft has an on-line Help facility which is a convenient way to look up information about a task you are performing, a feature you would like to know more about, or a command you want to use. The StitchCraft Help file contains comprehensive information on all aspects of StitchCraft including procedures, hints and techniques. This body of information is accessible in several different ways:

- a. Just press F1 while StitchCraft is active. This will bring up the Help file, open at the contents page. If you are working with a dialog box you would like to know more about, just press F1, the Help file will appear, open at the relevant page.
- b. Select *Contents Page* from the Help menu in StitchCraft and the StitchCraft Help file will open at the contents page.
- c. Select *What's This?* from the Help menu in StitchCraft. When you click on *What's This?*, the arrow will change to a question mark arrow, you can then point and click on any part of the StitchCraft window and the Help file will appear, open at the relevant page.

To learn more about how Help files work, press F1 whilst the StitchCraft Help file is open. This will bring up the Windows Help section describing how Help files work.

## Print a Help Manual

A full help manual is provided for people who prefer to refer to a printed manual. You can access this manual in two ways:

- a. To access the Help Manual before installation, insert the StitchCraft CD in the CD drive. Select the 'Manual' button from the StitchCraft setup screen.
- b. To access the Help Manual after installation, click on the *Help* menu then select *Help Manual*. The Help Manual will now open, you can either browse through it or print it out for later reference.

If you are unable to find sufficient information in the Help file or you would like something explained further, all registered users are entitled to free support, just contact Crafted Software by telephone or e-mail.

## Troubleshooting in StitchCraft

⊗ Problem	⊖ Causes	☺ Solution
Won't print	Hard drive full	Delete/remove files for more space
	Wrong printer driver	Check you have the correct drive.
	Print Manager stalled	Go to Print Manager & select resume
	No paper	Insert more paper
	Not plugged in correctly	Check print cable is correctly connected
Won't print whole chart	Printer Timeout too short	Reset Transmission Retry values in Control Panel to 200 or more
	Printer Buffer is too small	Reduce the Print Batch Size in the Settings for System - Printer Memory Issues
Won't print simulation	Printer Buffer is too small	Reduce Simulation Print Quality in the Settings for System - Printer Memory Issues
Wrong Colours on Printout	Ink has run out	Replace cartridge
	Calibration of Printer is poor	Calibrate Printer if Possible
Screen flicker with grey grid	Monitor refresh too slow	Change to solid gridlines
Thread colors too dark	Monitor not calibrated	Adjust your Contrast/Brightness controls or Calibrate monitor in StitchCraft
Thread colours inaccurate	Poor monitor quality	Lack of colour standards between monitors is a problem, calibrate your monitor if possible
	Some Colors May be Incorrect	Modify colors using Customisation features
Won't import correctly	Import is not a compatible file	Resave import in your graphics program in another format
Slow on importing	Import file too large	Re-save in graphics program at lower dpi

## StitchCraft Licence Agreement

- 1 In this agreement the supplier of the software "Crafted Software" is referred to as "we" and the word "you" shall refer to yourself as the licensee.
- 2 When we use the term "the program" it means the computer program titled "StitchCraft" with all associated documentation and upgrades.
- 3 We licence you to use the program provided that:
  - 3.1 If you are a company then only an employee authorised by you is permitted to use the program, and then only for your purposes;
  - 3.2 You only copy the program onto the hard disk of one computer ("the computer");
  - 3.3 You do not use the program on a multi-user or networked computer system. (Note: we do not consider the use of the program on one computer which is connected to a multi-user system or network to be used on a multi-user or networked computer system.);
  - 3.4 The program, or any part of the program, does not exist in the memory (be it ROM or RAM, or any other type of memory) of more than one computer at any one time;
  - 3.5 You do not alter, modify, reverse engineer, reverse assemble or reverse compile the program;
  - 3.6 You do not assign, sell or otherwise transfer the program to another person or allow another person to use the program without our consent;
  - 3.7 You use the program in accordance with the instructions provided;
- 4 Subject to the existing laws, in particular the Trade Practices Act, and any warranties, terms or conditions implied by these laws, WE ARE NOT by giving this license:
  - 4.1 Giving you any title to or ownership in the program;
  - 4.2 Accepting any responsibility for any damage caused by, or as a consequence of, the operation of the program;
  - 4.3 Accepting any responsibility for damage caused as a result of you attempting to make a copy of the program other than as provided in this license.
- 5 In the event that we breach an express or implied term, condition or warranty in this agreement then our liability shall be limited, at our option, to any one or more of the following:
  - 5.1 The replacement of the program;
  - 5.2 The repair of the program;
  - 5.3 The refund of the license fee.
- 6 Should the CD on which the program is supplied prove to be faulty then we will replace the CD, at no cost to you, provided it is returned within thirty days of our sending the program to you.
- 7 This license is and will be governed and interpreted according to the law of the State of New South Wales.
- 8 It is an offence to reproduce or otherwise copy material, including artistic works, which are the subject of copyright protection. In licensing this software to you we are in no way authorising or encouraging you to reproduce copyright protected works including artistic works.

**IT IS A BREACH OF THE COPYRIGHT ACT 1968 (CTH) TO COPY THE PROGRAM WITHOUT OUR PERMISSION. THE ACT PROVIDES FOR A FINE TO BE IMPOSED ON ANY PERSON WHO COPIES THE SOFTWARE WITHOUT OUR PERMISSION. WE WOULD ALSO BE ENTITLED TO SEEK DAMAGES IN THOSE CIRCUMSTANCES. IF PEOPLE MAKE USE OF THE PROGRAM WITHOUT PAYING THE LICENSE FEE THEN WE WILL BE DEPRIVED OF INCOME AND THE PROGRAM MAY NOT BE DEVELOPED FURTHER.**

## Product Registration

*Why should I register?*

- You will receive technical support
- You will be informed of new versions of StitchCraft
- You will receive discounted prices on new versions of Stitchcraft
- You will be informed of new disks of charts as they become available

*Where do I register?*

[www.stitchcraft.info/users/register.htm](http://www.stitchcraft.info/users/register.htm)

## Submitting User Charts

*What happens when I submit my own chart?*

- Your chart will appear on the next User Chart Disk
- You receive a free disk of charts by StitchCraft users from around the world (Send in several charts & you'll receive several User Disks with different charts)

*Please Note:*

- Photo conversions are not accepted for the chart disks. Photo conversions are normally very personalized and more difficult to sew than standard designs.
- The design you submit must be your own original design.
- You retain the Copyright of the design submitted. Crafted Software will contact you to ask your permission if your design is to be used in any Magazines, and that in such a situation, they will arrange with you a mutually suitable payment for use of the design. The design you're giving Crafted Software will be distributed to other users of StitchCraft, for them to view, sew or modify.

*How do I submit my chart?*

[www.stitchcraft.info/usercharts.htm](http://www.stitchcraft.info/usercharts.htm)

**Crafted Software – [www.stitchcraft.info](http://www.stitchcraft.info)**

Within Australia – Telephone: (02) 4757 3136

From Overseas – Tel: ++ 612 4757 3136

PO Box 78 Wentworth Falls, NSW 2782 Australia